

There is only one thing it needs. Before the drought it did not travel far to the source. When the drought came, lakes became rivers, rivers became puddles. They dug deeper and deeper then bore the Network. The creation of the Network was synchronous to the drought, yet now, advanced enough to prove efficacious to autonomous cybernetics. Their ability to locate a second source seemed arbitrary. As such, their ability is a result of material bionetics, for every seeker with a location circuit in their nerves can feel the frequencies of raw bismuth from millions of miles away. Without the seeker circuits, the race and all of civilisation will collapse. Even the alchemists who practice like necromancers may not persist without counterparts.

The Network was created in the blink of a rusty eye in Snoly. The drought was present for generations before it became necessary to seek. Alas, for years there was no other way before the human race finally played like children building LEGO cars, with bionetics. The ones with seeker circuits are not determined solely to seek, they are the ones who travel. It's through heat and speed of neuro-robotic clouds, containing minerals, that allow the re-solidifying of biodigital beings. Through years of organic mutation, naturally occurring biocircuits upload to sapient shells. Empty vessels never were so animated.

Insentient drifters dance and wrap intimately into the microcells. At once they know their purpose and how to regulate and remain undetected by the wider universe.

They are the cyberspies of the vast space, they locate what they need, follow without detection, retain and document the data in a neat orderly fashion. The slick, swift evaporation over millions of miles, undetected, is a phenomena no human could truly understand or replicate. These are supreme beings. Untouchable throughout the universe, they are a force that would cause no harm yet not ones to be reckoned with.

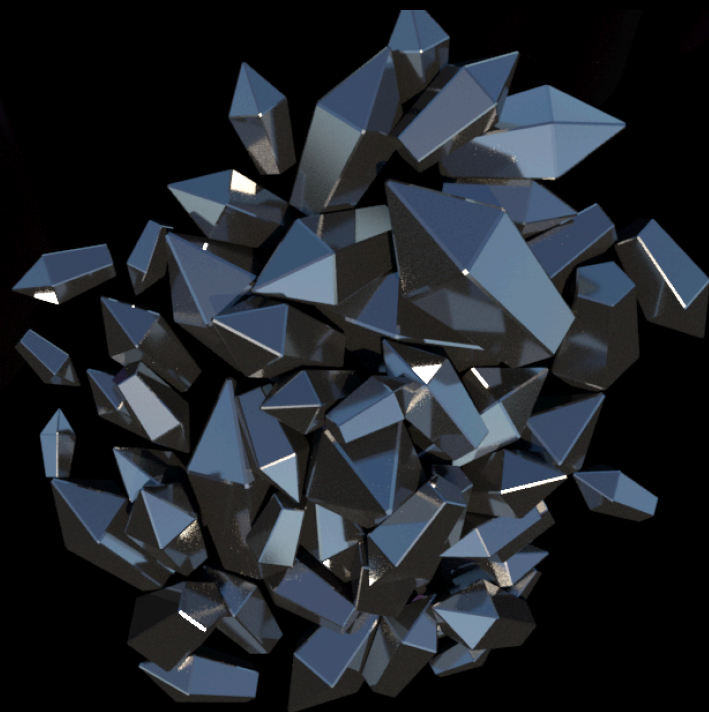
Heat drips,

minerals sift,

time shifts

The shell is a slave to the circuit - they have nothing better to do than become occupied. The circuit who found a biological match first occupies the circuit. Units of energy possess great strength over the ones they create...





They gain even more when they know when to stop and stunt growth. The beings of Snoly rely on limitations to growth and to accelerate the intelligence of the collective population. Circuit excretion of old mechanical parts produce ancillary counterparts to the privileged ones, the ones who reached their parts first.

Bionic society naturally imposes limits, the limit of Snoly was the Bismuth drought. The population have consciousness of some other kind. Not like human consciousness. The connection between beings of Snoly and their environment are unlike any of human kind. Their ability to move through particles presents them with a mystic physical loophole. Whilst they are incredibly advanced beings, they are aware of their limits, as they are a product of bionic natural programming. The stripped environment is a result of controlled decisions and selections. Controlled variables are a choice wiser than any human made. No distractions. Pure mineral diet. Self-manufacturing, single-purpose roles.

Irrefutable hierarchy, exploitative yet dependant - each role in its own power.

In Snoly, the group mentality operates communally. Roles are not shared, parts are made with one purpose and cannot be recast over a life time. The landscape of the planet is dark and barren. Terrain remains deep beneath dark pits. The surface of the planet is not visible from Earth through a telescope. These spies are flies on the wall of the universe. Reserved in character. Very fond of home comforts.

Neural

Controlled

Dependent

The minimal landscape, reliance on few materials, decision to use one circuit board with few variables, are the result of years of selective cyber breeding. The variables lie in micro fibres and metals lining the nerves of the circuit. Not much is known about the evolution of the circuits apart from they form in a way that replicates molecules and nerve endings, allowing for tissues that could be compared to brains.

Quite simply, the controllers realise the risks of leaving the population to mutate spontaneously without supervision. They may be supreme however they are all serving a purpose, the advanced circuits could not leave the planet because then

who would be left to control and manufacture? Seeker circuits are manufactured to resolve this very problem. They are designed by superiors as drones, remoteness and of the highest calibre, extremely agile and nimble. When the time comes; they are ready to seek.

Mabs was one of the newest grade of seeker circuits - designed only a hundred years ago. It serves to seek and only seek. The order is not always favourable for drones. There is nothing to do but float aimlessly when there are no seeking jobs. Mabs couldn't help but wonder, with its active little circuit, whether some other job might be more purposeful. So when Mabs was assigned the mission of a lifetime - Mabs felt neither happy nor excited, because these emotions do not exist in Snoly - Mabs felt driven and directed. Mabs' mission was one that no other had been subscribed over such difference, using particle dispersion, the atoms of a thousand minerals are zapped directly through Snoly's atmosphere. You might say Mabs felt a fleeting importance.

Before Mabs left for Earth, it was acquainted with pliant beings who knew no other way of life. Metallic restful shiny groups. As though a hundred bubbles were blown and never popped. The gatherings occur below the surface, in the depths of mineral pits, which cease to rise above the visible crust of the planet.

What can be taken from the present information, is that the pits are laminous with mineral, being actively extracted by the beings of Snoly, retracting what little light exists in the crevices.

There's not much to see here.

Unlike other imaginings of space creatures, when these sentient beings discovered humans, they failed to pose an immediate threat. In fact Mabs went undetected for some time on Earth. Mainly through its use of fibre optic cables. A commotion was shaken only when Mabs became curious and thought about connecting with humans through a physical realm. Because the mission was a pilot, no rules had been written about the do's and don'ts of Mabs' visit. Only one thing matters - whatever happens - Mabs must bring back mineral, in plentiful quantities - in order for manufacturing and mutation to commence.

How can Mabs, one small being, be a bearer of such a metaphorical and physical weight? Confidence in the biocyber design. A responsibility which, unless perfectly executed, will cost the entire civilisation. Mabs is a pristine focused entity, pure natural programming. But the neural pathways of Snoly beings are not entirely controlled by programming.

Neural networks can develop

unpredictable mutations

new environments

accelerate and stimulate learning pathways at unprecedented rates.

Unlimited universes expand, unfathomable to the human mind or existence.

Knowing that Snoly is out there does not reveal so much as a quarter of knowledge Mabs' kind possess about the order of time. Universes before have lived in ways that generated debris, much like what we find on the surface of Earth, that humans then send to space in the form of electronics, satellites, rockets, breathing systems and computers. Cycles are occurring throughout multiple universes. At times there have been active electronic planets, which have then been wiped out, then replenished. Over the course of time it is unusual to find only one planet surviving with the specific mineral at requirement. Basically what Mabs reveals is that there have been universes before the one within the human periphery that have developed technological advancements well beyond

the remit of human trials. Mabs reveals that these universes also failed at sustaining themselves.

How was this discovered? Mabs made a simple set of symbols for humans to decipher. The circuit was fighting every instinct in programming through biological mutations taking the form of impulsive misused purpose. On planet Snoly the merging process seems to require a vast amount of heat and energy. The velocities that Mabs must have reached to arrive on Earth could never be outputted by a human. Mabs thoroughly expressed (in best form it could) the issues of humans, profligate consumers of resources on habitats and construction they did not understand, coupled with variance in knowledge systems. "Destruction on this Earth is a given" - Mabs tweeted, 2019.

How long they won't last

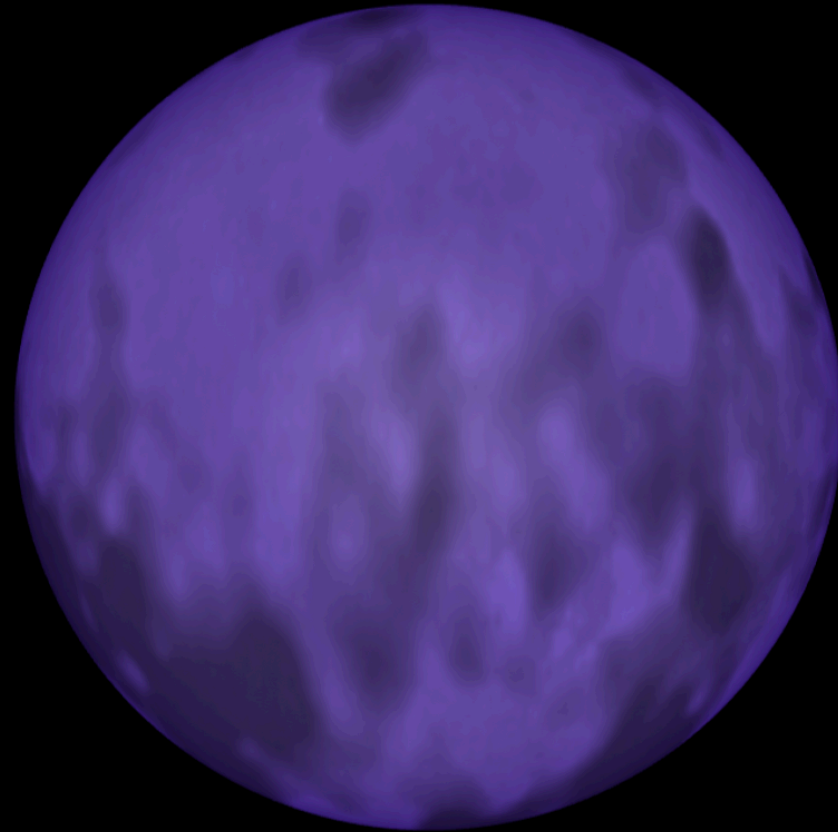
when they are not in tuned

to each living body

Not that it matters. As another society in another universe will make the same mistakes. Mabs and the other Snoly beings will be there when this happens.

∩ ∇ 王 ？ ∠ ⊙ 𠃉 7 𠃉 丨 ∘ 𠃉

𠃉 𠃉 𠃉 𠃉 𠃉 𠃉 𠃉 𠃉 𠃉 𠃉



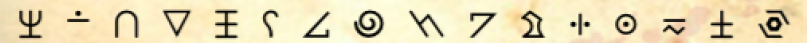
⋅ 𠃉 𠃉 𠃉 𠃉

Mabs is friendly for an alien.

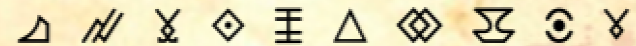
As any biocyber being, it craves reproduction, upgrade, and also interaction with other similar modules.

Mabs had to find a way of communicating quickly on Earth. This was the best way to go about the mission, Mabs assured the superior circuits.\* So Mabs requested for a communication circuit to assist Mabs with basic language development. How to subdue the complex patterns of Snoly into translatable symbols for measly humans?

\*Mabs was keen to communicate to a being that wasn't all circuit and spend some time in a new environment.

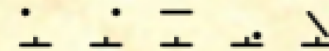


A B C D E F G H I J K L M N O P



Q R S T U V W X Y Z

Of course Mabs created other variations of the symbols for other languages rather than English, but chose to most commonly adopt these to be translated from English, as English appears the most widely spoken language on Earth.



1 2 3 4 5

Why so many different ways to write numbers? Zeros are so wasteful and unexpressive of true value, Mabs evaluated.